



# Selko<sup>®</sup>-pH

## Supports digestion and sustains optimal performance



### Microbial balance

A healthy microbial balance in the proximal intestine contributes to optimal feed utilisation

### Why Selko<sup>®</sup>-pH?



### High performing animals

The very competitive business scenario requests high performing birds to deliver profitable results



### SELKO-PH

Supports digestion, and maintains optimal poultry performance

### Business challenge - Protect poultry performance and profitability

The health status of a poultry farm has a strong influence on the farm's financial results. Intensive production system can influence the stable, balanced gut microbiota and quick action is required. Inclusion in water allows for flexible application and fast results.



### Reducing pH, increasing benefits

- Selko-pH lowers and stabilises pH of drinking water
- Feed digestion improves when the pH in the crop and stomach reduces
- A healthy microbial balance in the proximal intestine contributes to **optimal feed utilisation and animal performance**. This is especially important at the start of the production phase, as the intestinal flora of birds is under challenge



Scan the code for latest updates

## Improving poultry gut health:

### Trouw Nutrition's integrated strategy

Selko®-pH is part of the Poultry Gut Health programme that focuses on maintaining a microbial balance, reducing antibiotic use and improving production efficiency.

### Supporting poultry performance with Selko®-pH

#### Proven results

A large number of studies conducted around the world have shown Selko-pH to be effective. Trouw Nutrition Research & Development supports all studies conducted.

#### Recommended use

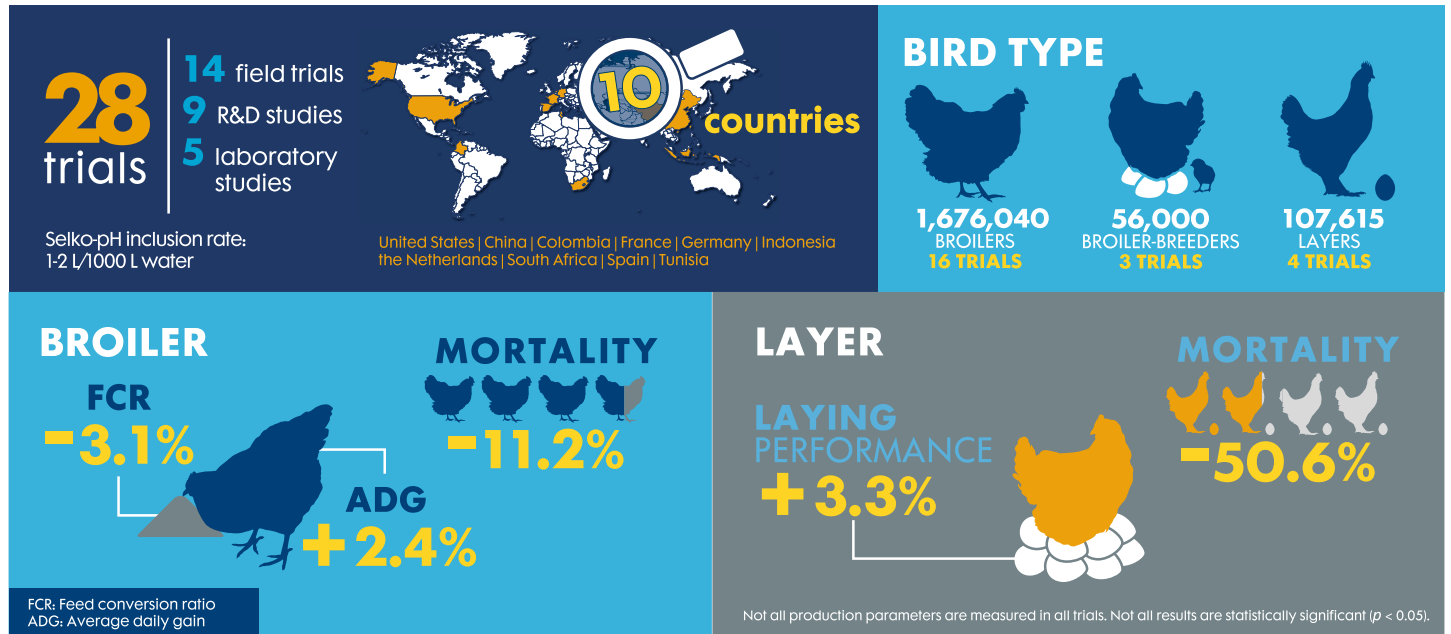
Selko-pH is applied via drinking water

## Recommended inclusion rate

A water titration is recommended to reach the optimal water pH of 5.5-6. Layers and breeders are sensitive to the taste of Selko-pH, therefore, it is advised to increase the application of Selko-pH stepwise. Start with 0.3 L/1000 L water, and increase the rate with 0.3 L/1000 L every two days, until the optimal water pH of 5.5-6 is reached. This is especially important when Selko-pH is applied to birds that are already in the production cycle. Contact Trouw Nutrition to discuss inclusion rate and your dosing equipment requirements.

#### Inclusion rate:

| L/1000 L water | Low alkalinity | Moderate alkalinity | High alkalinity |
|----------------|----------------|---------------------|-----------------|
| 0.0            | 7.29           | 8.03                | 7.87            |
| 0.2            | 4.30           | 5.42                | 6.67            |
| 0.4            | 3.83           | 4.21                | 6.10            |
| 0.6            | 3.67           | 3.91                | 5.41            |
| 0.8            | 3.59           | 3.77                | 4.74            |
| 1.0            | 3.53           | 3.68                | 4.38            |
| 1.2            | 3.50           | 3.62                | 4.18            |
| 1.4            | 3.47           | 3.57                | 4.04            |
| 1.6            | 3.45           | 3.54                | 3.94            |
| 1.8            | 3.43           | 3.51                | 3.86            |
| 2.0            | 3.41           | 3.49                | 3.80            |
| 2.2            | 3.40           | 3.47                | 3.76            |
| 2.4            | 3.39           | 3.45                | 3.72            |
| 2.6            | 3.38           | 3.44                | 3.69            |
| 2.8            | 3.38           | 3.43                | 3.66            |
| 3.0            | 3.37           | 3.42                | 3.63            |



## Data from Trial done in India on Broilers

### Zootechanical Performance

ABW **+2%** | ADG **+3%** | FCR **-4%** | Cumulative Mortality **-12%**



#### Summary

**Product name:** Selko®-pH

**Benefit:** Supports digestion, performance and gut health

**Use for:** Poultry, application in water

**Programmes:** Antibiotic Reduction/  
Salmonella control/ Production Efficiency/ Heat stress

Ask your Trouw Nutrition representative how Selko-pH can support the digestion and performance of poultry.

Contact us: T: +91 40 2988 0258 | E: [customercareindia@trouwnutrition.com](mailto:customercareindia@trouwnutrition.com)

Follow us: [in](#) trouw-nutrition-india | [fb](#) TrouwNutritionIndia | [tw](#) Trouw Nutrition India

**Disclaimer:** The information in this document is believed to be correct as of the date issued. Given the variety of factors that can affect the use of a Selko product, the user is responsible for determining whether the Selko product and dosage is fit for a particular purpose and suitable for user's method of use. Selko B.V. or any of its affiliates makes no warranties, including but not limited to warranty of merchantability or fitness for a particular purpose. Product labelling and associated claims may differ based on government requirements. All quotations, orders, confirmations and transactions are subject to our General Conditions of Sale ([www.nutreco.com](http://www.nutreco.com)). The applicability of any other terms and conditions is explicitly rejected.

© Trouw Nutrition. The trademarks shown in this document are registered in The Netherlands, The USA and other countries. These trademarks are owned by Selko B.V. or Micronutrients USA LLC or Trouw International B.V. IntelliBond products are registered as Selko IntelliBond in The Netherlands, and other countries.

Trouw Nutrition India Private Limited, Corporate Office: Unit No: L4 04, SLN Terminus, Survey No. 133, Beside Botanical Gardens, Gachibowli, Hyderabad, Telangana, India - 500032  
Registered Office and Factory: Plot No G24, Polepally Village, Jadcherla Mandal, Mahabubnagar, Telangana, India - 509301