



IntelliBond® Layer

Smart minerals, Smart nutrition, Smart decision

IntelliBond is the original and most researched hydroxy trace mineral that takes mineral nutrition to the highest standard. IntelliBond supports both optimized bioavailability and economics.

Selko® IntelliBond® trace minerals meet the highest quality standards available in the poultry industry today



This results in significantly less destruction of essential nutrients within the premix or feed.



Unlike sulphate trace mineral forms, IntelliBond trace minerals are less reactive with other feed ingredients.



This can contribute to the preservation of expensive nutrients. So they can be more available to the bird.

IntelliBond has a fully defined crystalline structure with high metal potency embodied in OptiSize particle. The molecular structure releases the metal slowly into the solution under less than a pH of 4 and it will be very stable above a pH of 4.

This structure allows significantly greater amounts of trace metal to be delivered to the intestinal tract for absorption, supporting animal performance and well-being.

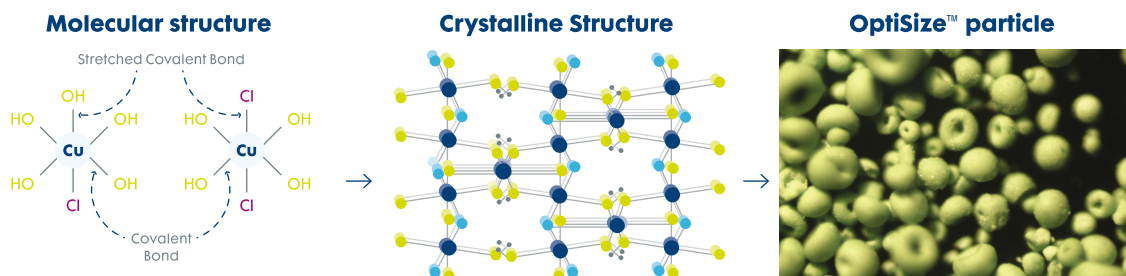


Figure 1. A diagram illustrating the crystalline structure of IntelliBond® C. stretched covalent bonds are within the sub units, which together make the crystals.



Scan the code for latest updates

5 trials

India, EU, Australia, and UK

IntelliBond® Benefits in Layers:
Improved Egg production and quality



Combination of IntelliBond C + IntelliBond Z + IntelliBond M vs inorganic treatments

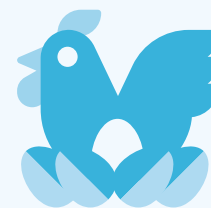
HDEP	+1.81%	Zinc excretion	-43%
Shell thickness*	+0.71%	Copper excretion	-54%
Egg Mass	+2.34%	Maganese excretion	-25%
Egg Feed Conversion Ratio	-2.72%		

IntelliBond might modulate effect of high ambient temperature on egg production

Negative correlation (p < 0.001) between daily egg production and daily maximum temperature with Inorganic sources. No significant correlation with IntelliBond. ** (R2 = 0.026 vs R2 = 0.156)

5-8:1
Return On Investment

*HEDPs Hen Day Egg production
** Regression analysis



High level copper benefits in Broilers

4310 hens

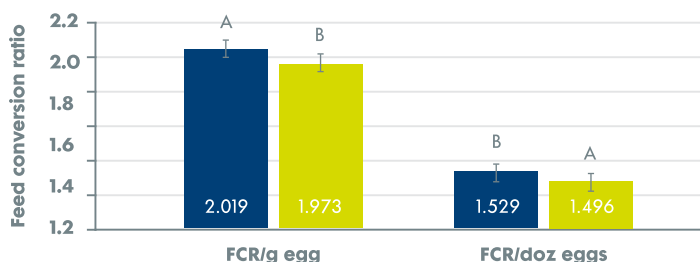


18 Treatment comparisons



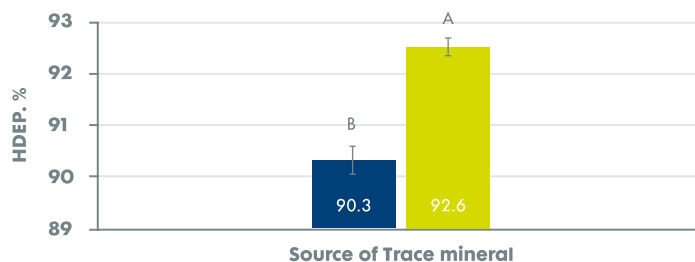
IntelliBond® increases layer performance

The benefit of a superior trace mineral source such as IntelliBond is well established in Laying hens, which has been proved to significantly improve laying performance and egg feed conversion, especially in late lay.



■ Inorganic ■ IntelliBond Z, C and M

Figure 3. Feed conversion ratio (FCR) of layers fed inorganic Zn, Cu and Mn vs IntelliBond Z, C and M. Columns with different superscripts (a,b) are significantly different (p < 0.05)



■ Inorganic ■ IntelliBond Z, C and M

Figure 4. Hen-Day Egg Production (HDEP) of layers fed inorganic Zn, Cu and Mn vs IntelliBond Z,C and M. Columns with different superscripts (a,b) are significantly different. p Values < 0.0005 are significantly different.

- IntelliBond C (Copper hydroxychloride) - 54%
- IntelliBond Z (Zinc hydroxychloride) - 55%
- IntelliBond M (Manganese hydroxychloride) - 44%

Selko® IntelliBond® portfolio

IntelliBond offers the purest source of copper, zinc and manganese available to the industry today via:



Our numerous food safety and quality certifications mean sellers and users from around the world can be confident when they turn to IntelliBond trace minerals.

As your Trouw Nutrition representative how IntelliBond can improve your layer performance.

Contact us: T: +91 40 2988 0258 | E: customercareindia@trouwnutrition.com
Follow us: trouw-nutrition-india | TrouwNutritionIndia | Trouw Nutrition India

Disclaimer: the information in this document is believed to be correct as of the date issued. Given the variety of factors that can affect the use of a selko product the user is responsible for determining whether the selko product and dosage is fit for a particular purpose and suitable for the user's method of use. Selko B.V. or any of its affiliates makes no warranties, including but not limited to warranty of merchantability or fitness for a particular purpose. Product labelling and associated claims may differ based on government requirements. All quotations, orders, confirmations and transactions are subject to our general conditions of sale (www.nutreco.com). The applicability of any other terms and conditions is explicitly rejected. Trouw Nutrition. The trademarks shown in this document are registered in the Netherlands, The USA and other countries. These trademarks are owned by Selko B.V. or Micronutrients USA LLC or Trouw international B.V. IntelliBond products are registered as Selko IntelliBond in the Netherlands and other countries.

