

ANTIBIOTIC  
REDUCTION

PRODUCTION  
EFFICIENCY



## Presan<sup>®</sup>-FY

# Improves gut health and production in poultry

### Why Presan<sup>®</sup>-FY?



#### Economic impact

The health status of birds strongly influences the farm's financial results



#### Safe and efficient production

Pressure on microbial control and cost efficiency need a robust gut health



#### Presan-FY

Improves poultry performance in antibiotic-free production systems



### Business challenge

#### Do not let your profitability be harmed

**The health status of a poultry farm has a strong influence on the farm's financial results.** Gut health is of critical importance for poultry performance. Having stable, diverse microbiota and a strong gut wall are important for gut health and bird performance, especially in antibiotic-reduced or antibiotic-free production systems.



#### An integrated approach to improve gut health

- An optimal microbial balance is essential **to improve litter quality and corresponding footpad integrity**
- A strong gut barrier integrity **increases efficiency of broiler production, resulting in optimal profitability**
- An optimal health status of poultry achieves maximum performance **in an antibiotic-free production system**



Scan the code for latest updates

## Improving poultry gut health:

### Trouw Nutrition's integrated strategy

Presan® -FY is part of the Poultry Gut Health programme that focuses on health and performance improvement, aiming to increase the number of flocks raised without antibiotics. Presan-FY boosts gut barrier integrity and may improve microbial balance in the entire gastrointestinal tract, resulting in improved poultry performance.

## Improving performance with Presan® -FY

### Proven results

A large number of studies conducted around the world have shown Presan-FY to be effective. Trouw Nutrition Research & Development supports all studies conducted.

## Recommended use

Presan-FY can be incorporated into the feeding program via premixes or feed formulation.

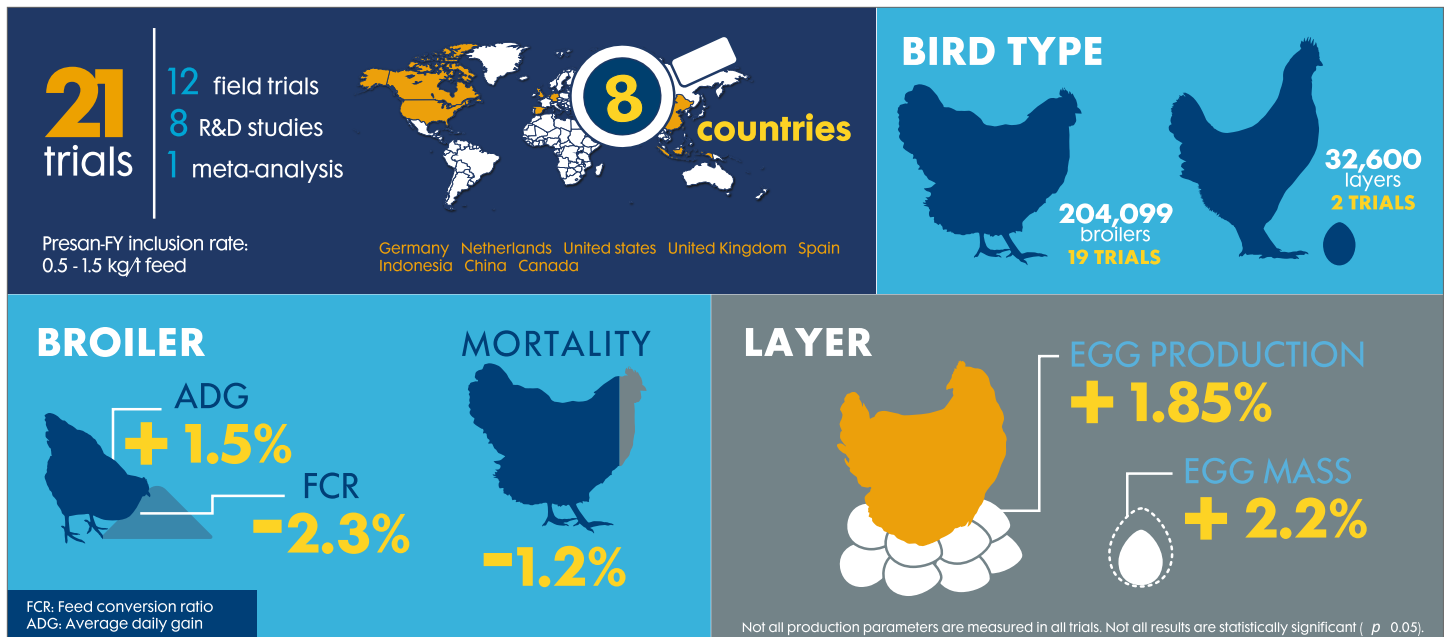
## Inclusion level:

### Broilers:

- 0.5 – 1.5 kg/t of complete feed

### Layers & breeders:

- 1.0 – 1.5 kg/t of complete feed



Learn more visit [trouwnutrition.in](https://trouwnutrition.in)

## Summary

**Product:** Presan® -FY

**Benefit:** Improves poultry performance, supporting antibiotic-reduced production

**Use for:** Poultry

**Programme:** Antibiotic Reduction / Production Efficiency / Poultry Gut Health

Ask your Trouw Nutrition representative how Presan-FY can improve your poultry production and help you to reduce the need for antibiotics.

Contact us: T: +91 40 2988 0258 | E: [customercareindia@trouwnutrition.com](mailto:customercareindia@trouwnutrition.com)

Follow us: [in](#) trouw-nutrition-india | [f](#) TrouwNutritionIndia | [e](#) Trouw Nutrition India

**Disclaimer:** The information in this document is believed to be correct as of the date issued. Given the variety of factors that can affect the use of a Selko product, the user is responsible for determining whether the Selko product and dosage is fit for a particular purpose and suitable for user's method of use. Selko B.V. or any of its affiliates makes no warranties, including but not limited to warranty of merchantability or fitness for a particular purpose. Product labelling and associated claims may differ based on government requirements. All quotations, orders, confirmations and transactions are subject to our General Conditions of Sale ([www.nutreco.com](http://www.nutreco.com)). The applicability of any other terms and conditions is explicitly rejected. © Trouw Nutrition. The trademarks shown in this document are registered in The Netherlands, The USA and other countries. These trademarks are owned by Selko B.V. or Micronutrients USA LLC or Trouw International B.V. IntelliBond products are registered as Selko IntelliBond in The Netherlands, and other countries.

Trouw Nutrition India Private Limited, Corporate Office: Unit No: L4 04, SLN Terminus, Survey No. 133, Beside Botanical Gardens, Gachibowli, Hyderabad, Telangana, India - 500032  
Registered Office and Factory: Plot No G24, Polepally Village, Jadcherla Mandal, Mahabubnagar, Telangana, India - 509301