

Selko®-pH

Supports digestion and sustains optimal performance

Why Selko®-pH?



MICROBIAL CHALLENGES

Intensive production systems increasingly demand microbial control in order to avoid infections



HIGH PERFORMING ANIMALS

The very competitive business scenario requests high performing birds to deliver profitable results



SELKO-PH

Supports digestion, and maintains optimal poultry performance

SUMMARY

PRODUCT NAME: Selko®-pH

BENEFIT: Supports digestion and performance

USE FOR: Poultry, application in drinking water

PROGRAMME: Poultry Gut Health

BUSINESS CHALLENGE

Protect poultry performance and profitability

The health status of a poultry farm has a strong influence on the farm's financial results. Intensive production systems face microbial challenges that require quick action. Inclusion in water allows for flexible application and fast results.

REDUCING PH, INCREASING BENEFITS



Selko-pH reduces and stabilises pH of drinking water

Feed digestion improves when the pH in the crop and gizzard reduces

A healthy microbial balance in the proximal intestine contributes to **optimal feed utilisation and animal performance**. This is especially important at the start of the production phase, as the intestinal flora of birds is still developing



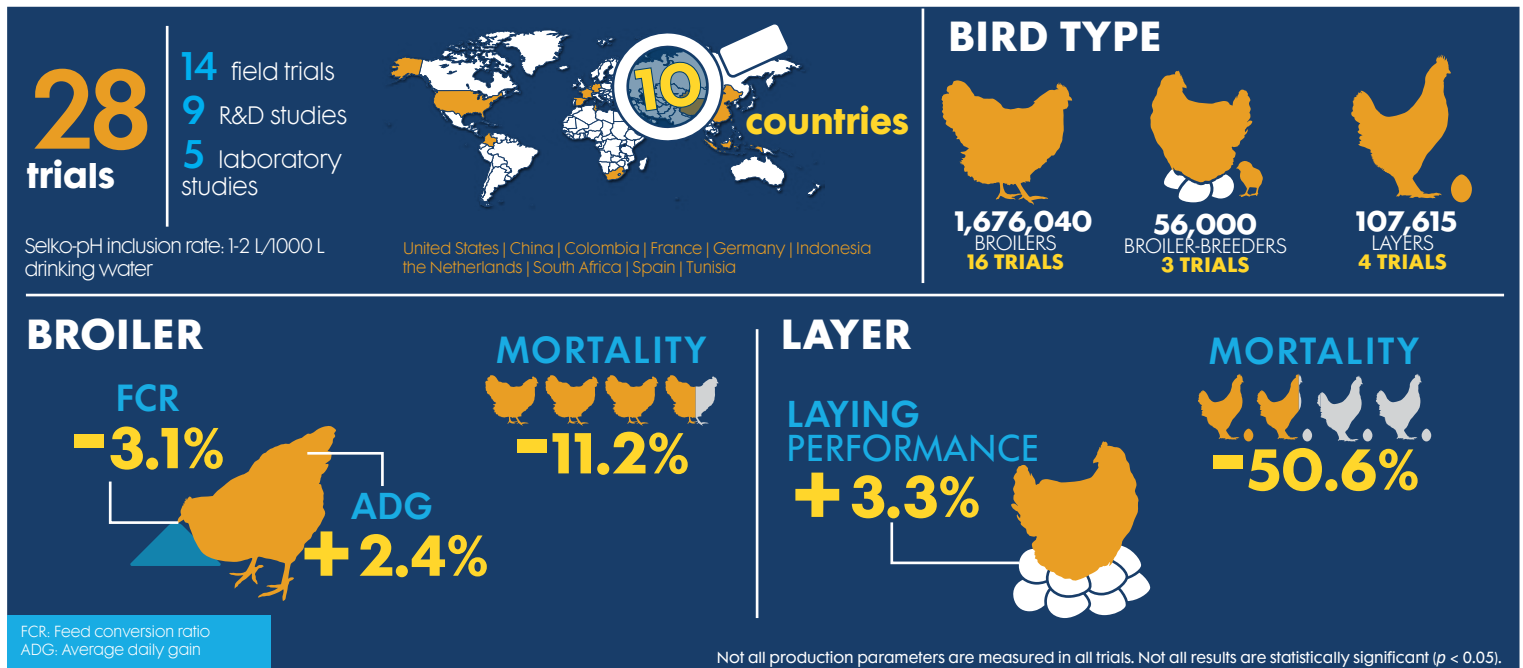
IMPROVING POULTRY GUT HEALTH: Trouw Nutrition's integrated strategy

Selko®-pH is part of the Poultry Gut Health programme that focuses on microbial control, reducing antibiotic use and enhancing animal performance.

Supporting poultry performance with Selko®-pH

Proven results

A large number of studies conducted around the world have shown Selko-pH to be effective. Trouw Nutrition Research & Development supports all studies conducted.



Recommended use

Selko-pH is applied via drinking water. In situations with soft water or iron water lines, it is recommended to use Selko pH S instead.

Recommended inclusion rate

A water titration is recommended to reach the optimal drinking water pH of 3.8. Layers, breeders and turkeys are sensitive to the taste of Selko-pH, therefore, it is advised to increase the application of Selko-pH stepwise. Start with 0.3 L/1000 L drinking water, and increase the rate with 0.3 L/1000 L every two days, until the optimal water pH of 3.8 is reached. This is especially important when Selko-pH is applied to birds that are already in the production cycle.

Contact Trouw Nutrition to discuss inclusion rate and your dosing equipment requirements.

Inclusion rate:

1-2L/1000L drinking water

GET ALL THE DETAILS
Contact your local representative

Ask your Trouw Nutrition representative how **Selko-pH** can improve the digestion and performance of poultry.

Disclaimer: The information in this document is believed to be correct as of the date issued. Given the variety of factors that can affect the use of a Selko product, the user is responsible for determining whether the Selko product and dosage is fit for a particular purpose and suitable for user's method of use. Selko B.V. or any of its affiliates makes no warranties, including but not limited to warranty of merchantability or fitness for a particular purpose. Product labelling and associated claims may differ based on government requirements. All quotations, orders, confirmations and transactions are subject to our General Conditions of Sale (www.nutreco.com). The applicability of any other terms and conditions is explicitly rejected.
© Trouw Nutrition. The trademarks shown in this document are registered in The Netherlands, The USA and other countries. These trademarks are owned by Selko B.V. or Micronutrients USA LLC or Trouw International B.V. IntelliBond products are registered as Selko IntelliBond in The Netherlands, and other countries.